

# Baton Rouge SSO Program

*Program Progress Report*



March 2012



Prepared for  
City of Baton Rouge/  
East Baton Rouge Parish  
Department of Public Works

Prepared by  
**CH2MHILL**  
In association with  
SIGMA Consulting Group, Inc.  
ILSI Engineering

BATON ROUGE   
Program

# Project Management



As anticipated, the first quarter has been marked by significant design and construction project activity. The well integrated Mayor-President's Office, the Department of Public Works, and the Program Management Team continue to guide technical elements involved in improving the City-Parish's sewer infrastructure and communicate with area residents on construction impacts and issues related to the program.

### Promoting partner diversity and continuing to support local businesses

remains a key element during implementation. SSO Program staff will be participating in several local business networking and outreach events and encourage interested business owners to attend.

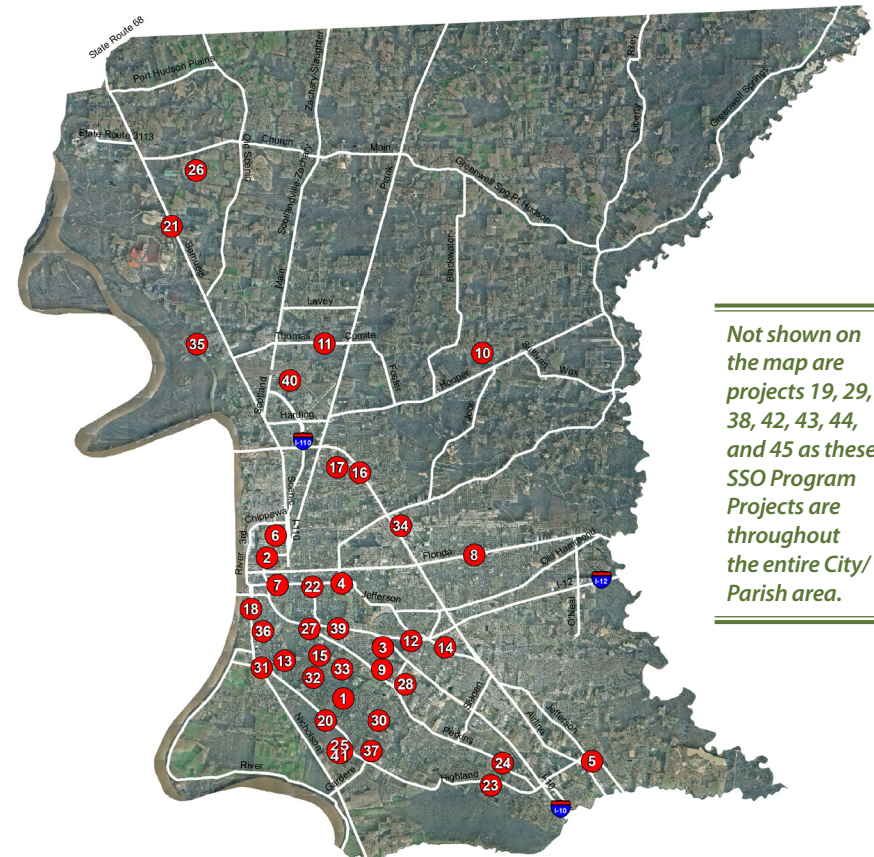
- April 10, 2012 – Connecting Businesses with Contract Procurement Conference at the Smith-Brown Memorial Student Union at Southern University and A&M College
- June 7, 2012 - Mayor's Small Business Development Summit at the Baton Rouge River Center

For additional information on these events or SSO Program projects, go to [www.brprojects.com](http://www.brprojects.com).

### 2012 1st Quarter Highlights

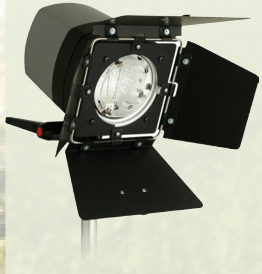
- 326 companies / contractors
- 107 active projects
  - » 23 projects completed
  - » 45 projects under construction
  - » 39 projects in design

As shown on the following map, there are 45 SSO projects currently under construction throughout the City/Parish. Please refer to page 8 and 9 of this progress report to see the details of those projects.



### Announcing New Quarterly Reports:

In keeping with our commitment to maintaining cost effectiveness and sustainability, the SSO Program Progress Reports will be issued quarterly starting June 2012. Monthly one-page status summary reports will be posted on the website at [www.brprojects.com](http://www.brprojects.com). If you have any questions or wish to receive a hard copy of the monthly summary reports, please contact Kristie at 225.663.5192. Thank you for your understanding!!



## In the Spotlight

### Perkins/Old Perkins Area – Pump Station 514 Improvements Project



The construction of Pump Station 514 will allow for larger capacity.

#### Project Summary

The SSO Program is improving the City/Parish's infrastructure by upgrading and increasing the capacity of components of the collection system. Located at the intersection of Perkins Road and Old Perkins Road, Pump Station 514 serves a critical role as it is responsible for transferring significant flow from the area between Interstate 10 and Interstate 12 upstream to the South Wastewater Treatment Plant.

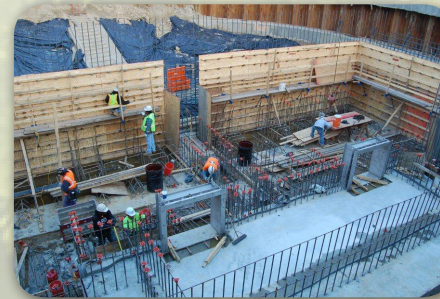
In order to meet the future peak wet weather flow demands, the pump station is being upgraded to a higher capacity pump station that will be powered with eight adjustable speed submersible 150-horsepower pumps, three generators to provide back-up power in case of a power outage, odor control equipment (specifically a biotower), and a new building to house the equipment. The current building onsite will be converted to a repair shop for City/Parish use.

#### Impacts of Improvements

The pump station replacement will help alleviate chronic sanitary sewer overflows (SSOs) at the gravity basins upstream of the pump station. Upon completion, the pump station will process one third of the flow destined for the South Wastewater Treatment Plant.

#### Project Progress

Wharton-Smith, Inc., the construction contractor, began work in August 2011. Wet well pouring and forming is expected to be completed in June 2012. The routing of electrical conduits is expected to be finished in September and biotower construction will finish around October 2012. Wharton-Smith is expecting to complete all construction by February 2013.



Ongoing form work construction for Pump Station 514 wet well.



The existing pump station building will be converted to a repair shop for City/Parish use.

- **Goals:** Increase flow processed by Pump Station 514 by installing greater capacity pumps; install odor control equipment; provide for backup power source in case of outages
- **Method:** Replace the pump station with larger submersible/wet well pumps
- **Anticipated Construction Cost:** \$8,387,000
- **Improvements:** Eight new pumps, new controls building, generators, and odor control equipment

Project Information				Project Components				SSO Partners		Cost	Schedule****			
#	Project Name	Project Type	DPW Project #	Upgraded Pump Stations	Replaced/Rehabilitated Manholes *	Linear Feet of Forcemain Improvements	Linear Feet of Gravity Main Improvements	Design Consultant	Construction Contractor	Construction Contract Amount	Project Start	Advertise for Construction Bid	Project End	
1	RMAP1: Kleinpeter Area Upgrades	RMAP1	***	03-RMP-S14	1	-	2,000	-	Monroe & Corie	Allen & LeBlanc	\$324,024.30	11/7/2006	5/5/2007	5/8/2009
2	Jefferson Highway - Hoo Shoo Too Road	Rehab	PDP	07-AR-US-0049	-	553	-	117,110	DPW	Allen & LeBlanc	\$1,769,438.12	5/16/2007	6/27/2008	9/22/2009
3	Gurney Road - Joor Road	Capacity	PDP	07-PS-BD-0017	1	-	14,475	-	Neel-Schaffer	Grady Crawford	\$1,543,733.74	1/18/2008	8/29/2008	10/2/2009
4	25th Street - North Acadian Thruway	Capacity	PDP	09-GS-UF-0008	-	-	-	-	Hartman Engineering	Design Only	\$0.00	2/2/2009	3/5/2010	2/26/2010
5	Staring Lane - Boone Drive	Rehab	PDP	08-AR-UF-0004	-	665	-	139,050	CSRS, Inc.	Grady Crawford	\$4,460,957.60	11/27/2007	1/23/2009	5/3/2010
6	Comite Drive - Foster Road: Phase I	Capacity	PDP	07-PS-BD-0019	3	-	12,080	-	Monroe & Corie	Hemphill Construction	\$1,923,521.75	3/3/2008	1/16/2009	7/2/2010
7	Staring Lane FM: Phase I - Burbank to Highland	Capacity	PDP	06-WC-CP-0036	-	-	2,260	-	Monroe & Corie	James Construction	\$4,615,500.00	1/11/2008	9/19/2008	7/2/2010
8	RMAP1: PS136 Area Upgrades	RMAP1	***	99-RMP-S16	9	-	27,700	20,700	Sigma Consulting	Nottingham Construction	\$8,994,708.67	11/7/2006	11/7/2006	9/15/2010
9	NWWTP Odor Control	WWTP	PDP	07-WT-TP-0030	-	-	-	-	Environmental Engineering Svs	SEMS, Inc.	\$5,363,052.00	6/29/2007	9/30/2009	11/19/2010
10	Foster Road - Hooper Road	Capacity	PDP	07-FM-BD-0046	-	-	26,200	-	PEC	Hemphill Construction	\$8,761,675.00	2/14/2008	1/9/2009	11/30/2010
11	Burbank Road - Gardere Lane	Rehab	PDP	08-AR-UF-0003	-	787	-	168,300	CSRS, Inc.	Allen & LeBlanc	\$6,126,532.88	5/16/2007	11/14/2008	1/3/2011
12	RMAP1: Industriplex Area Upgrades	RMAP1	***	99-RMP-S08	6	-	4,000	-	Forte & Tablada	BRH Garver	\$9,914,059.65	11/7/2006	11/9/2006	1/31/2011
13	Comite Drive - Foster Road: Phase II	Capacity	**	02-CS-HC-0001	-	-	-	1,361	Monroe & Corie	JB James Construction	\$895,957.00	7/7/2008	6/26/2009	3/17/2011
14	Sullivan Rd / Lovett Rd / Wax Rd	Capacity	PDP	07-PS-BD-0018	3	-	4,200	2,100	Hartman Engineering	Don M. Barron Contractor	\$2,158,346.00	1/17/2008	1/16/2009	3/17/2011
15	SWWTP Combined IAPs	WWTP	PDP	08-TP-BD-0031	-	-	-	-	CDM, MWH, URS	Brasfield & Gorrie	\$27,363,571.00	11/6/2006	12/12/2008	5/27/2011
16	Scotland Avenue - Progress Road	Rehab	PDP	09-AR-BD-0011	-	300	-	208,000	CSRS, Inc.	Magnolia Construction	\$9,207,593.70	9/9/2008	9/29/2009	6/13/2011
17	Elm Grove Garden Road - Harding Blvd	Rehab	PDP	09-AR-BD-0012	-	839	-	199,500	CSRS, Inc.	Allen & LeBlanc	\$12,989,270.56	10/1/2008	9/29/2009	9/26/2011
18	Oak Villa Blvd - Choctaw Street	Rehab	PDP	08-AR-UF-0005	-	990	-	245,000	CSRS, Inc.	Grady Crawford	\$8,997,369.73	4/14/2008	5/15/2009	10/7/2011
19	Highland Road - Buchanan Street	Capacity	PDP	08-GS-ST-0021	-	-	13,304	9,404	Burk-Kleinpeter/Justice & Huang (A JV)	Gilmore & Sons Construction	\$4,505,700.48	3/14/2008	4/23/2010	10/25/2011
20	ZATNIP: General Design	Capacity	PDP	N/A	-	-	-	-	SJB / Owen & White	Design Only	\$0.00	3/24/2008	-	12/16/2011
21	Foster Drive - Government Street: Phase A	Rehab	PDP	09-AR-BD-0015A	-	629	-	80,600	CSRS, Inc.	Grady Crawford	\$4,819,752.00	5/25/2009	6/25/2010	2/28/2012
22	Nicholson Dr - Highland Rd - Perkins Rd: Phase A	Capacity	PDP	09-FM-MS-047A	-	20	8,400	3,400	Buchart - Horn	Grady Crawford	\$2,591,612.82	6/29/2009	10/29/2010	2/28/2012
23	ZATNIP - Phase IV: Zachary Improvements	Capacity	PDP	10-FM-IF-0005	-	-	42,500	-	SJB / Owen & White	Wicker Construction	\$7,091,115.00	3/24/2008	8/27/2010	2/28/2012
					<b>23</b>	<b>4,783</b>	<b>157,119</b>	<b>1,194,525</b>			<b>\$134,417,492.00</b>			

PROJECTS COMPLETED

\* All manholes are inspected in the project area. Only some are rehabilitated or replaced.  
 \*\* These projects are included in the Program Delivery Plan (PDP), however are not shown as phases A/1 or B/2. During design it was determined that these projects should be split into phases for better constructability.

\*\*\* These projects are included in the Program Delivery Plan (PDP), however are either Remedial Action Plan 1 (RMAP1) projects or are projects identified in the Wastewater Master Plan (not part of the EPA Consent Decree).  
 \*\*\*\* Dates based on anticipated Consent Decree Extension.

PROJECTS UNDER CONSTRUCTION

Project Information				Project Components				SSO Partners		Cost	Schedule****			
#	Project Name	Project Type	DPW Project #	Upgraded Pump Stations	Replaced/Rehabilitated Manholes *	Linear Feet of Force Main Improvements	Linear Feet of Gravity Main Improvements	Design Consultant	Construction Contractor	Construction Contract Amount	Project Start	Advertise for Construction Bid	Project End	
1	Kenilworth Blvd - Boone Drive	Rehab	PDP	09-AR-BD-0014	-	1,159	-	72,000	CSRS, Inc.	Allen & LeBlanc	\$5,168,129.23	3/26/2009	10/8/2010	4/3/2012
2	Downtown Area - Pump Station Improvements	Capacity	PDP	08-PS-ST-0056	3	-	-	-	Shaw Env & Infrastructure	Guy Hopkins Construction	\$4,841,000.00	3/24/2008	9/3/2010	4/9/2012
3	Citiplace/Essen Area: PS 119 & Force Main Improvements	Capacity	PDP	08-FM-UF-0024	1	-	8,100	-	GSA Consulting Engineers	BRH Garver	\$2,801,502.80	2/25/2008	8/20/2010	4/18/2012
4	Foster Drive - Government Street: Phase B	Rehab	**	09-AR-BD-0015B	-	-	-	78,700	CSRS, Inc.	Insituform Technologies	\$2,863,100.00	5/25/2009	6/25/2010	4/24/2012
5	Group Project 2: Small Pump Stations	Capacity	PDP	08-PS-IF-0046	7	-	-	-	ABMB Eng.	Grady Crawford	\$3,475,914.11	3/10/2008	3/26/2010	4/24/2012
6	Capitol Lake Dr-Gayosa St/25th St - North Acadian Thrwy	Capacity	PDP	07-PS-BD-0048	-	-	19,320	19,150	Hartman Eng/Shread-Kuyrkendall	Morgan Contracting of FL	\$10,497,867.95	1/14/2008	6/18/2010	5/3/2012
7	South Blvd-St. Joseph St/25th St - North Acadian Thrwy	Capacity	PDP	08-GS-ST-0018	-	-	18,360	3,000	Evans-Graves Hartman Eng	Reynolds, Inc.	\$17,965,049.20	3/27/2008	4/16/2010	5/15/2012
8	Sharp Road - Florida Blvd	Rehab	PDP	09-AR-BD-0013	-	1,154	-	274,475	CSRS, Inc.	Reynolds, Inc.	\$17,492,855.00	1/15/2009	4/16/2010	7/3/2012
9	Bluebonnet Blvd - Jefferson Hwy: Phase I	Rehab	PDP	10-AR-MS-0042	-	822	-	54,200	CSRS, Inc.	Allen & LeBlanc	\$3,848,872.40	2/8/2010	3/18/2011	7/25/2012
10	Brookstown Road - Evangeline Street: Phase II	Rehab	PDP	10-AR-BD-0040	-	1,075	-	84,000	CSRS, Inc.	John Plott Company	\$5,467,639.63	10/8/2009	11/12/2010	8/24/2012
11	Silverleaf Road - Ford Street	Rehab	PDP	10-AR-BD-0041	-	1,388	-	115,200	CSRS, Inc.	John Plott Company	\$8,024,945.73	10/26/2009	1/28/2011	8/31/2012
12	Bluebonnet Blvd - Jefferson Hwy: Phase II	Rehab	PDP	10-AR-MS-0043	-	1,325	-	63,100	CSRS, Inc.	Reynolds, Inc.	\$4,482,869.35	3/23/2010	4/29/2011	9/12/2012
13	Stanford Avenue - Morning Glory Road	Rehab	PDP	10-AR-BD-0045	-	704	-	57,600	CSRS, Inc.	Grady Crawford	\$4,991,345.20	6/25/2010	7/8/2011	10/10/2012
14	Multiple Pump Stations: Jefferson Hwy - Park Forest Drive	Capacity	PDP	09-PS-MS-0046	6	-	-	-	CSRS, Inc.	Grady Crawford	\$2,922,471.70	6/8/2009	3/25/2011	11/7/2012
15	Acadian Thruway - Perkins Road	Rehab	PDP	10-AR-BD-0044	-	517	-	36,900	CSRS, Inc.	Grady Crawford	\$3,454,867.14	5/31/2010	8/26/2011	11/20/2012
16	Brookstown Road - Evangeline Street: Phase I	Rehab	PDP	10-AR-BD-0039	-	1,150	-	161,000	CSRS, Inc.	Grady Crawford	\$10,309,180.44	7/10/2009	10/15/2010	12/5/2012
17	Group Project 1A: Veterans Parkway - Gravity Mains	Capacity	PDP	08-GS-UF-0053	-	-	-	46,000	URS Corp.	Texas Sterling Construction	\$19,581,108.00	3/10/2008	10/29/2010	12/13/2012
18	Highland Road - Washington Street	Rehab	PDP	11-AR-MS-0022	-	975	-	123,800	CSRS, Inc.	Wharton-Smith, Inc.	\$11,483,138.00	10/13/2010	9/9/2011	12/28/2012
19	Annual Parish Wide Physical Inspection Contract	Other	***	08-PI-UF-0051	-	-	-	-	VIS	Video Industrial Services	\$2,672,437.10	1/1/2009	7/8/2011	12/30/2012
20	Central Consolidated PS 42 FM: Phase I	Capacity	PDP	09-FM-MS-036A	1	-	32,000	-	SJB/Owen & White	Reynolds, Inc.	\$15,470,867.00	11/7/2008	4/29/2011	1/4/2013
21	ZATNIP - Phase I: 3 PS & Equalization	Capacity	PDP	10-FM-IF-0002	3	-	-	-	SJB/Owen & White	Max Foote Construction	\$18,486,500.00	3/24/2008	8/20/2010	1/14/2013
22	Acadian Thruway - Claycut Road	Rehab	PDP	10-AR-BD-0046	-	712	-	76,000	CSRS, Inc.	Allen & LeBlanc	\$6,297,277.60	8/2/2010	8/26/2011	1/24/2013
23	Perkins/Old Perkins Area: Pump Station 514 Improvements	Capacity	PDP	09-PS-MS-0034	1	-	-	-	GEC	Wharton-Smith, Inc.	\$8,387,000.00	4/24/2009	4/8/2011	2/18/2013
24	Highland Road - Burbank Drive	Capacity	PDP	08-FM-ST-0023	-	-	39,400	-	GOTECH, Inc.	RACON, Inc.	\$20,591,067.00	3/31/2008	10/29/2010	3/13/2013
25	SWWTP Wet Weather Improvements: Phase I	WWTp	PDP	08-TP-BD-0033	-	-	-	-	CDM	Brasfield & Gorrie	\$108,443,892.00	1/23/2008	3/26/2010	4/2/2013
26	ZATNIP - Phase III: 964 to Red Mud Lakes	Capacity	PDP	10-FM-IF-0004	-	-	27,000	-	SJB/Owen & White	Hemphill Construction	\$8,947,920.00	3/24/2008	10/15/2010	4/25/2013
27	Central Consolidated FM (2,3,5,7,10): Phase I	Capacity	PDP	09-FM-MS-033A	-	-	22,000	-	Shread-Kuyrkendall & Asc, Inc.	Wharton-Smith, Inc.	\$11,154,538.00	11/7/2008	9/16/2011	6/4/2013
28	Staring Lane FM - Phase III: Perkins to PS58	Capacity	PDP	06-WC-CP-0036	-	-	10,200	-	Monroe & Corie	Reynolds, Inc.	\$7,175,653.70	4/30/2009	5/27/2011	6/13/2013
29	EPA SCADA	SCADA	***	03-GMP-0001	-	-	-	-	N/A	Prime Controls, L.P.	\$699,685.00	3/2/2010	5/13/2011	6/28/2013
30	Staring Lane FM - Phase II: Highland to Perkins	Capacity	PDP	06-WC-CP-0036	-	-	12,363	-	Monroe & Corie	JB James Construction	\$9,892,090.00	4/4/2008	8/6/2010	7/18/2013
31	Central Consolidated PS 42 FM: Phase II	Capacity	**	09-FM-MS-036B	-	-	26,000	-	SJB/Owen & White	S.J. Louis Construction	\$12,322,052.40	11/7/2008	12/2/2011	7/31/2013
32	Central Consolidated FM (2,3,5,7,10): Phase II	Capacity	**	09-FM-MS-033B	-	-	13,405	-	Shread-Kuyrkendall & Assoc, Inc.	Bid Opening 4/17/12	\$8,300,000.00	11/7/2008	3/16/2012	8/1/2013
33	Bayou Duplantier Area Sewer Upgrades	Capacity	PDP	09-GS-MS-0042	-	-	12,600	600	Neel-Schaffer	S.J. Louis Construction	\$4,835,681.50	8/31/2009	7/11/2011	8/29/2013
34	Choctaw Storage and Pump Station Facility	WWTp	PDP	09-PS-UF-0009	3	-	25,000	-	CDM	Brasfield & Gorrie	\$43,237,000.00	4/14/2008	10/22/2010	12/6/2013
35	ZATNIP - Phase II: Red Mud Lakes FM	Capacity	PDP	10-FM-IF-0003	-	-	33,500	-	SJB/Owen & White	Wharton-Smith, Inc.	\$14,583,700.00	3/24/2008	12/16/2011	12/20/2013
36	Central Pump Station - PS 42	Capacity	PDP	09-PS-UF-0003	1	-	-	-	MWH	Reynolds, Inc.	\$10,527,000.00	10/21/2008	10/14/2011	12/26/2013
37	PS 58A Overflow Pump Station	Capacity	PDP	09-PS-UF-0001	1	-	-	-	GEC	Bid Opening 4/10/12	\$14,400,000.00	1/5/2009	3/9/2012	5/15/2014
38	Emergency Generators Installation	Other	**	09-PS-BD-0037	-	-	-	-	N/A	Grady Crawford	\$7,113,634.00	5/23/2011	3/28/2008	5/21/2014
39	Central Consolidated Pump Stations (2,3,4,5,6,7,10 and 91)	Capacity	PDP	09-PS-MS-0035	9	-	-	-	Burk Kleinpeter/JJG	Reynolds, Inc.	\$20,497,631.90	11/7/2008	8/12/2011	5/27/2014
40	Group Project 1B: Veterans Parkway - PS and FM	Capacity	PDP	08-PS-UF-0054	8	-	33,500	600	Evans-Graves/Burk Kleinpeter	Bid Opening 4/10/12	\$18,300,000.00	3/10/2008	2/10/2012	7/14/2014
41	SWWTP Wet Weather Improvements: Phase II	WWTp	PDP	08-TP-BD-0055	-	-	-	-	MWH	Brasfield & Gorrie	\$111,251,000.00	10/1/2008	8/19/2011	12/24/2014
42	Emergency Generators Purchasing	Other	**	09-PS-BD-0037	-	-	-	-	N/A	ARCCO	\$19,087,906.03	10/1/2009	6/15/2009	12/31/2014
43	Annual Parish Wide Manhole Rehab Contract	Rehab	***	11-MH-UF-0006	-	-	-	-	N/A	Grady Crawford	\$1,146,458.24	-	9/16/2011	-
44	Annual Parish Wide CIPP Contract	Rehab	***	11-CP-UF-0007	-	-	-	-	N/A	Boh Brothers	\$1,856,634.00	-	9/16/2011	-
45	Annual Parish Wide Sewer Repair & Replacement	Rehab	***	11-PN-UF-0043	-	-	-	-	N/A	Grady Crawford	\$1,163,048.50	-	9/30/2011	-
				<b>44</b>	<b>10,981</b>	<b>332,748</b>	<b>1,266,325</b>			<b>\$646,512,229.85</b>				

\* All manholes are inspected in the project area. Only some are rehabilitated or replaced.

\*\* These projects are included in the Program Delivery Plan (PDP), however are not shown as phases A/1 or B/2. During design it was determined that these projects should be split into phases for better constructability.

\*\*\* These projects are included in the Program Delivery Plan (PDP), however are either Remedial Action Plan 1 (RMAP1) projects or are projects identified in the Wastewater Master Plan (not part of the EPA Consent Decree).

\*\*\*\* Dates based on anticipated Consent Decree Extension.

Project Information				SSO Partners	Cost	Schedule****			
#	Project Name	Project Type	DPW Project #	Design Consultant	Estimated PDP Construction Value	Project Start	Advertise for Construction Bid	Project End	
1	SCADA - Master Plan	SCADA	***	tba	TBA	\$0.00	3/2/2010	4/6/2012	12/28/2017
2	Multiple Pump Stations: Nicholson Drive - Brightside Drive	Capacity	PDP	09-PS-MS-0048	Arcadis U.S., Inc.	\$5,950,000.00	9/14/2009	4/6/2012	7/24/2014
3	Airline Highway - Goodwood Blvd: Phase I	Rehab	PDP	11-AR-MS-0027	CSRS, Inc.	\$11,900,000.00	2/8/2011	4/6/2012	8/13/2013
4	Hooper Storage	WWTP	PDP	09-PS-UF-0007	TRC Engineers	\$19,115,000.00	1/19/2009	4/13/2012	5/6/2014
5	Government Street - South Acadian Thruway	Capacity	PDP	09-GS-MS-0043	GSA Consulting Engineers	\$4,680,000.00	8/28/2009	4/20/2012	9/12/2013
6	Airline Highway - Goodwood Blvd: Phase II	Rehab	PDP	11-AR-MS-0028	CSRS, Inc.	\$11,900,000.00	2/8/2011	6/15/2012	11/21/2013
7	O'Neal Lane Pump Stations Improvements: Phase A	Capacity	PDP	10-PS-MS-0050	MWH	\$12,226,000.00	5/25/2010	7/13/2012	12/24/2014
8	O'Neal Lane Pump Stations Improvements: Phase B	Capacity	PDP	10-PS-MS-0051	URS Corp.	\$9,800,000.00	5/25/2010	7/13/2012	12/24/2014
9	Plank Road - Kleinpeter Road	Capacity	PDP	09-GS-UF-0028	Forte & Tablada	\$8,000,000.00	3/23/2009	7/20/2012	5/15/2014
10	Nicholson Dr - Highland Rd - Perkins Rd: Phase B	Capacity	**	09-FM-MS-047B	Buchart - Horn	\$9,480,000.00	6/29/2009	8/17/2012	10/23/2013
11	Antioch Road - Chadsford Drive	Rehab	PDP	TBA	CSRS, Inc.	\$7,700,000.00	7/14/2011	10/12/2012	2/18/2014
12	O'Neal Lane Pipeline Projects: Phase A	Capacity	PDP	10-FM-MS-008A	URS Corp.	\$12,157,000.00	9/29/2009	1/11/2013	6/26/2014
13	Jones Creek Road - Tiger Bend Road	Rehab	PDP	TBA	CSRS, Inc.	\$5,200,000.00	9/14/2011	1/18/2013	5/27/2014
14	O'Neal Lane Pipeline Projects: Phase B	Capacity	**	10-FM-MS-008B	URS Corp.	\$5,300,000.00	9/29/2009	2/1/2013	7/17/2014
15	Airline Highway Pipeline Projects	Capacity	PDP	10-GS-MS-0007	ABMB Eng.	\$35,240,000.00	1/30/2009	4/12/2013	12/24/2015
16	Plank Road Pump Station Improvements	Capacity	PDP	11-PM-MS-0024	Arcadis U.S., Inc.	\$9,300,000.00	4/13/2011	5/10/2013	4/23/2015
17	Scenic Highway - Spanish Town Road: Phase 1	Rehab	PDP	TBA	CSRS, Inc.	\$8,600,000.00	2/22/2012	5/17/2013	9/23/2014
18	Multiple Pump Stations: Burbank Drive - Siegen Lane	Capacity	PDP	11-PS-MS-0026	Hartman Engineering	\$4,100,000.00	4/18/2011	7/19/2013	4/2/2015
19	Interstate 110 - Hollywood Street	Rehab	PDP	TBA	CSRS, Inc.	\$6,000,000.00	6/18/2012	9/13/2013	1/20/2015
20	Hooper Road Pump Station	Capacity	PDP	10-PS-MS-0048	Stanley	\$11,935,000.00	5/3/2010	11/8/2013	4/21/2016
21	Florida Blvd Pump Station Improvements	Capacity	PDP	11-PS-MS-0003	Brown & Caldwell	\$15,000,000.00	1/28/2011	1/24/2014	3/8/2016
22	East Blvd - Government Street	Rehab	PDP	TBA	CSRS, Inc.	\$9,600,000.00	12/3/2012	2/28/2014	7/7/2015
23	Scenic Highway - Spanish Town Road: Phase 2	Rehab	PDP	TBA	CSRS, Inc.	\$8,600,000.00	3/5/2013	5/30/2014	4/6/2016
24	Lovett Road - Greenwell Springs: Phase A	Capacity	PDP	10-FM-MS-0049A	SJB/Owen & White	\$13,364,000.00	5/3/2010	6/6/2014	11/19/2015
25	Sherwood Forest & Goodwood Blvds Pipeline Improvements	Capacity	PDP	11-FM-MS-0005	Forte & Tablada	\$10,200,000.00	1/3/2011	7/11/2014	12/24/2015
26	Oak Villa Blvd - Monterey Blvd	Capacity	PDP	11-FM-MS-0025	Professional Engineering Consultants	\$9,000,000.00	4/18/2011	7/18/2014	12/31/2015
27	Lovett Road - Greenwell Springs: Phase B	Capacity	**	10-FM-MS-0049B	SJB/Owen & White	\$8,780,000.00	5/3/2010	8/8/2014	1/21/2016
28	Siegen Lane - Interstate 10	Rehab	PDP	TBA	CSRS, Inc.	\$6,100,000.00	6/10/2013	9/5/2014	3/11/2016
29	Multiple Pump Stations: Highland Road - Kenilworth Parkway	Capacity	PDP	10-PS-MS-0009	AECOM	\$8,926,760.00	2/8/2010	12/5/2014	2/20/2017
30	Ardenwood Drive - Winbourne Avenue	Rehab	PDP	TBA	CSRS, Inc.	\$4,700,000.00	10/11/2013	1/9/2015	5/17/2016
31	Highland Road Pipeline Improvements: Phase A	Capacity	PDP	11-FM-MS-0004	Evans Graves	\$9,741,000.00	1/5/2011	4/24/2015	10/6/2016
32	Flannery Road - Florida Blvd: Phase 1	Rehab	PDP	TBA	CSRS, Inc.	\$7,900,000.00	2/20/2014	5/15/2015	9/20/2016
33	Joor Road - Greenwell Springs Road	Capacity	PDP	11-FM-MS-0023	TRC Engineers / Digital Engineering & Imaging	\$6,900,000.00	4/18/2011	6/19/2015	3/1/2017
34	Highland Road Pipeline Improvements: Phase B	Capacity	**	11-FM-MS-0004	Evans Graves	\$8,118,000.00	1/5/2011	6/26/2015	12/8/2016
35	Plank Road - Port Hudson Pride Road	Capacity	PDP	11-FM-MS-0036	Buchart - Horn	\$4,800,000.00	8/5/2011	7/17/2015	2/28/2017
36	Flannery Road - Florida Blvd: Phase 2	Rehab	PDP	TBA	CSRS, Inc.	\$7,900,000.00	7/7/2014	9/25/2015	1/31/2017
37	Multiple Pump Stations: Highway 61 - Plank Road	Capacity	PDP	11-PS-MS-0035	GEC	\$6,000,000.00	9/26/2011	10/30/2015	6/12/2017
38	Multiple Pump Stations: Prescott Rd - Greenwell Springs Rd	Capacity	PDP	11-PS-MS-0034	MWH	\$4,800,000.00	9/19/2011	10/30/2015	6/12/2017
39	North 38th Street - Gus Young Avenue	Rehab	PDP	TBA	CSRS, Inc.	\$3,600,000.00	8/25/2014	11/13/2015	3/21/2017
						\$352,612,760.00			

PROJECTS UNDER DESIGN

\* All manholes are inspected in the project area. Only some are rehabilitated or replaced.  
 \*\* These projects are included in the Program Delivery Plan (PDP), however are not shown as phases A/1 or B/2. During design it was determined that these projects should be split into phases for better constructability.

\*\*\* These projects are included in the Program Delivery Plan (PDP), however are either Remedial Action Plan 1 (RMAP1) projects or are projects identified in the Wastewater Master Plan (not part of the EPA Consent Decree).  
 \*\*\*\* Dates based on anticipated Consent Decree Extension.

## *Projects Recently Advertised for Construction Bids:*

### **Group 1B Metro Airport Area Pump Stations and Forcemain Upgrades (City-Parish No: 08-PS-UF-0045):**

This project includes the construction of eight pump stations, odor control, site work and associated yard piping. The installation of approximately 600 linear feet of gravity main sewer pipe and approximately 33,500 linear feet of forcemain sewer pipe. The project advertised for construction bids on 2/10/12. Mandatory pre-bid meeting was held 2/28/12 and construction bids are due 4/10/12.

**Pump Station 58A Overflow Improvements (City-Parish No: 09-PS-UF-0001):** This project includes the construction of a new pump station (PS58) which will pump dry weather flow to the existing gravity system and wet weather flows directly the South WWTP. The project advertised for construction bids on 3/9/12. Mandatory pre-bid meeting scheduled for 3/27/12 and construction bids are due 4/10/12.

### **Central Consolidation (East) Forcemain – Phase 2(City-Parish No: 09-PS-FM-UF-033B):**

This project includes the installation of 13,005 linear feet of ductile iron forcemain and 405 linear feet of jacked and bored casing and pipe. The project advertised for construction bids on 3/16/12. Mandatory pre-bid meeting scheduled for 4/3/12 and construction bids are due 4/17/12.

## *Projects To be Advertised for Construction Bids in April 2012:*

SCADA – Master Plan

Multiple PS: Nicholson Drive – Brightside Drive (09-PS-MS-0048)

Airline Highway – Goodwood Blvd: Phase 1 (11-AR-MS-0027)

Hooper Storage (09-PS-Uf-0007)



Keeping you informed during construction is important to us

## March 2012

300 North Boulevard,  
Room 208  
Baton Rouge, LA 70802  
(225) 389-3158  
DPW@brgov.com

## BATON ROUGE SSO *Program Progress Report*

